

<http://www.gamma.mpe-garching.mpg.de/~hcs/CBIB/>

The Web-Based COMPTTEL Bibliography

Helmut Steinle

Max-Planck-Institut für extraterrestrische Physik, Garching, Germany



Compton Gamma Ray Observatory (CGRO)



Introduction

More than 500 publications which refer to the COMPTTEL instrument on-board the *Compton Gamma Ray Observatory* (launched in April 1991) or to results obtained by it have been published since 1982.

A complete bibliography has been established on WWW accessible pages and is kept up-to-date at the Max-Planck-Institut für extraterrestrische Physik, the site of the COMPTTEL principal investigator. All publications are accessible using the WWW.

(This bibliography contains all publications about COMPTTEL, or containing results from COMPTTEL, or making reference to COMPTTEL.)

To date, there are six pages:

- the **Main Page** with a description of the bibliography and all its options,
- the **Full Bibliography** page, which lists all publications with
 - full title,
 - full author list,
 - the complete reference.
 In addition there are
 - attributed key-words,
 - the publication is categorized,
 - the actual publication status as well as
 - links to electronic versions of the paper
 are given. This list is ordered by the year of publication
- the **Short Bibliography** page, which is ordered by first author name. This list only lists the first author, the full title and the full reference.
- The **Input Form** consists of two pages and its use is restricted to members of the COMPTTEL team. This shall be the main tool to enter new papers as they are published. The first page requires the identification of the user. Once submitted, the validated user is presented with a form to input a new publication or to change an existing entry. (The latter function is not yet implemented.) A new entry is entered simultaneously in the Full- and in the Short Bibliography lists.
- the **Request Hardcopies** page opens up a new window into which the user can copy a reference from the Full- or Short Bibliography pages by "cut and paste". The address the hardcopy should be sent to has to be given as well.

It is planned to include a **search** function which should enable the user to search for authors, keywords, etc.

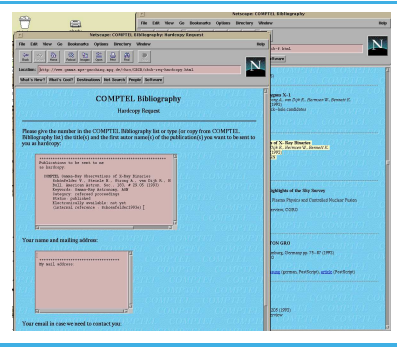
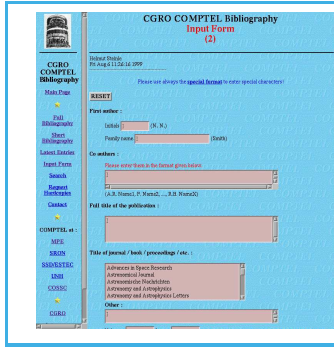
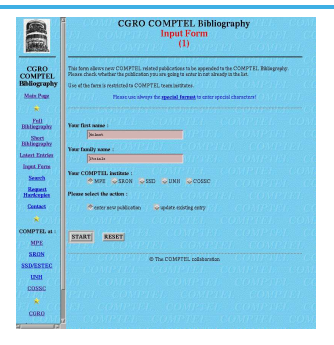
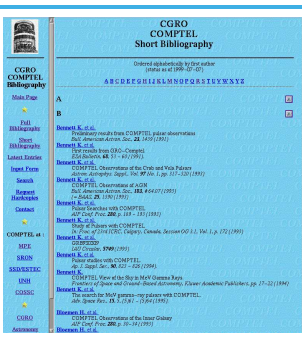
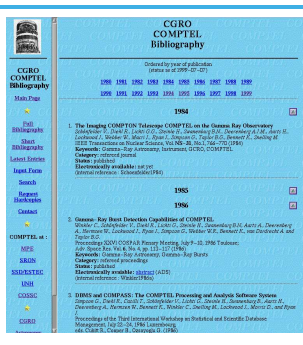
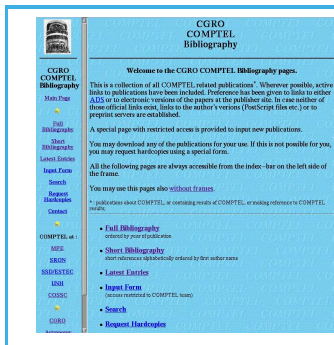
The default bibliography is based on frames, however the **option to use a frameless version is offered.**

For all pages the top part as it appears on the Web browser is depicted below. The pages are freely accessible and are permanently maintained and updated. The COMPTTEL Bibliography is also accessible through links provided at the COMPTTEL sites and the COMPTON Observatory Science Support Center at GSFC.



The COMPTTEL Instrument

It is the instrument placed in the middle of the CGRO platform and operates in the 0.8 - 30 MeV (gamma-ray) energy range.



Contact:
 Dr. Helmut Steinle
 Max-Planck-Institut für extraterrestrische Physik
 Postfach 1603
 85740 Garching
 Germany
 E-mail: hcs@mpe.mpg.de

<http://www.gamma.mpe-garching.mpg.de/~hcs/CBIB/>

